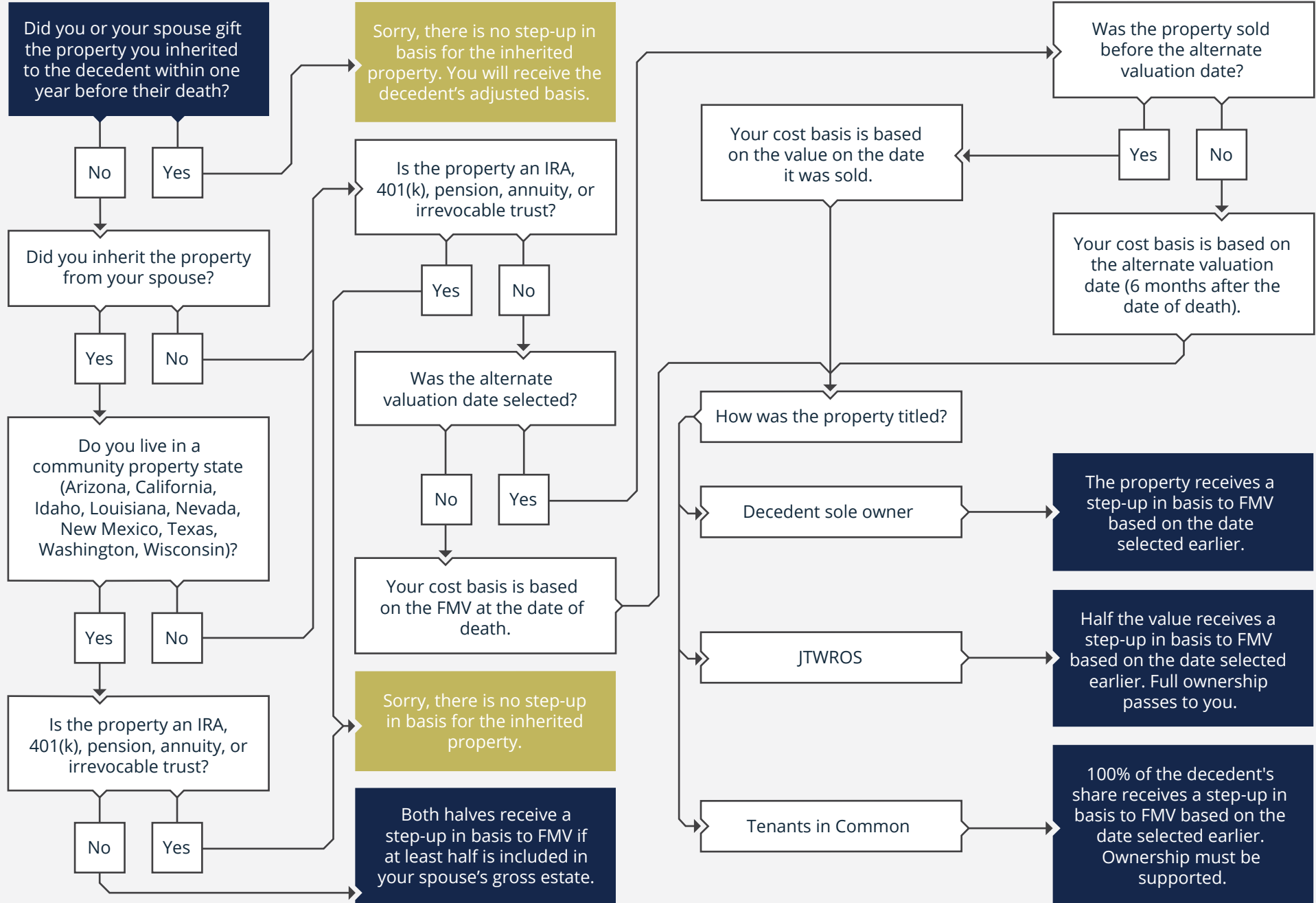


2023 · WILL I RECEIVE A STEP-UP IN BASIS FOR THE APPRECIATED PROPERTY I INHERITED?

Start Here



Want to know how this would apply to your situation?



Get A Free Retirement Analysis for Ages 50+



A 4-Step complimentary process that includes:

1. A One-Page Easy-To-Understand Financial Plan
2. Investment Analysis
3. Full Tax Return Analysis in "Layman's Terms"

--> [Click Here to Begin Step 1 of Your Free Analysis](#)

Securities and advisory services offered through LPL Financial, a Registered Investment Advisor, Member FINRA/SIPC

This information is not intended to be a substitute for specific individualized tax or legal advice. We suggest that you discuss your specific tax issues with a qualified tax or legal advisor.

Traditional IRA account owners have considerations to make before performing a Roth IRA conversion. These primarily include income tax consequences on the converted amount in the year of conversion, withdrawal limitations from a Roth IRA, and income limitations for future contributions to a Roth IRA. In addition, if you are required to take a required minimum distribution (RMD) in the year you convert, you must do so before converting to a Roth IRA.

3850 Vine St., Suite 100A, Riverside, CA 92507 | info@planablewealth.com | 951-900-8850 | <https://planablewealth.com>