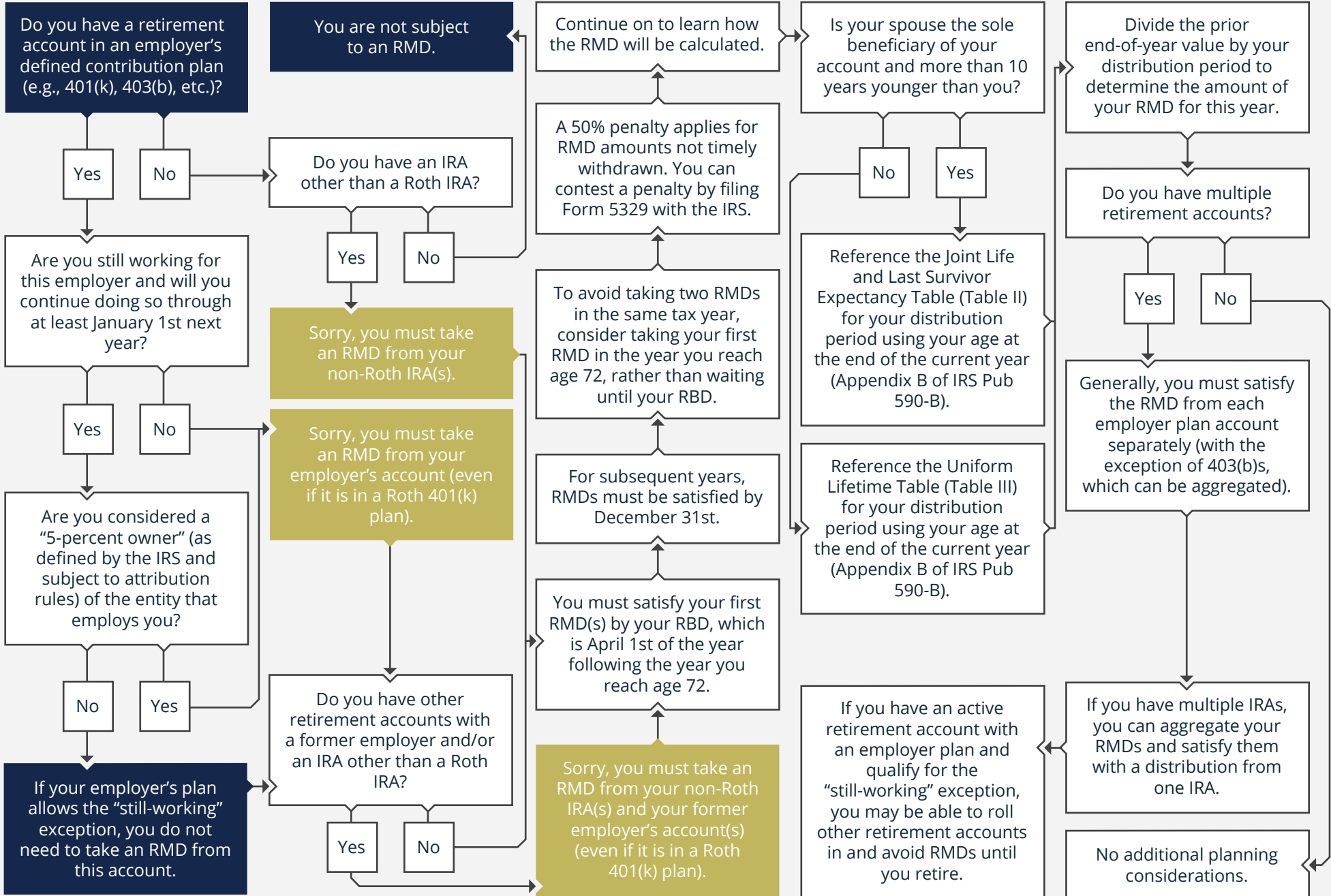


2022 · CAN I AVOID TAKING MY RMD AFTER REACHING MY REQUIRED BEGINNING DATE (RBD)?

Start Here



Want to know how this would apply to your situation?



Contact Planable Wealth to have a conversation with one of our financial professionals



Securities and advisory services offered through LPL Financial, a Registered Investment Advisor, Member FINRA/SIPC

Cameron Valdez

3850 Vine St. Suite 100A Riverside, CA 92507

info@planablewealth.com | 951-900-8850 | planablewealth.com